

V.A. Protsenko, M.V. Babiy, V.A. Nastasenko

*Kherson State Maritime Academy, Ukraine
(E-mail: ESEU@ukr.net)*

Mathematical modeling of the roller-rope coupling operation in misalignment conditions

The article deals with the results of construction and mathematical modeling of rope-roller coupling in condition of radial misalignment. As a result of modeling, the operation of coupling is revealed in the presence of misalignment of the shafts connected by it. Formulas are obtained that allow to determine the elongation of the rope depending on the magnitude of misalignment, as well as the design parameters of the coupling. The results of the investigations also allow determining the radial load from the coupling on the shafts at any angle of rotation of the coupling. Numerical simulation by the obtained formulas made it possible to establish that coupling is characterized by high compensating ability and low radial stiffness. So, with a radial displacement of 0.5 mm (for a prototype coupling with elastic star allow only 0.25 mm), the rope-roller coupling creates a load of only 5 N on the shafts, with a rope elongation of 5.5 μm . The dependencies obtained are approved during the design of the coupling, and the results of the calculations on them are checked by comparison with the results of the construction and showed a coincidence. The obtained results can be used in the design of rope-roller couplings.

Keywords: mathematical model, misalignment, coupling, rope, load, tightening.

Introduction

For the declared prospects of any design, a specific input can be obtained by performing an experimental or calculated study of its parameters and characteristics. For couplings, the most important indicator is the compensating capacity, which is characterized by the force of the coupling on the shafts - the radial load, which connects the radial stiffness of the coupling and the radial misalignment Δ_r . Therefore, the estimation of the radial load on the shafts from the coupling during its operation under misalignment conditions is an actual task. Determination of the load from the coupling to the shafts, in turn, is impossible without determining the deformation of the elastic link of the coupling.

Statement of the research task

Researching coupling shown on Figure 1. It contains two half-couplings - the external (1) and the internal (2), which are joined by a segment of the rope (3), which may be several, both ends (4) and (5) of the rope (3) are fixed in the pins (6), which are installed in the external half-coupling (1), and the internal half-coupling (2) contains the rollers (8) installed with the possibility of turning on the axes (7), between which there is a rope (3) that covers the rollers (8).

The coupling works as follows. When rotating by the actuator of the external half-coupling (1), with it, the pins (6) are rotated causing the tension of the rope (3). The tensioned rope (3), covering the rollers (8), is actually presses on them and on the axis (7), creating a torque on the driven internal half-coupling (2) and rotating it. In the event of misalignment of the half couplings (1) and (2), the rollers 8 of the driven half-coupling (2) shall be rolled up along the rope (3), due to which the compensation of misalignment will occur. In the case of in-line arrangement of the half-coupling the rollers (8) will not rotate along the rope (3).

The rope 3 of the coupling is blown by air when the coupling is rotated, and when the rope is destroyed, half-couplings have the possibility of a non-impact relative rotation due to the difference in their outer diameters. The coupling parts have simple configuration and do not require precise machining, they can be made on a lathe, even in ship conditions. Replacing the rope (3) is not a problem - just unscrew the two screws that fix its ends (4) and in (5) in the pins (6).

Determination of the deformation of the elastic link of the rope-roller coupling for calculating the radial load from the coupling to the shafts when operating under misalignment is the purpose of this article.

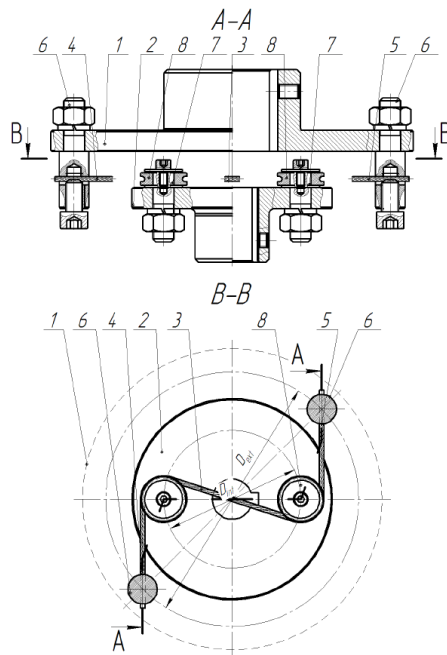


Figure 1. General scheme of roller-rope coupling

Statement of the main material

Lets consider the operation of the coupling in the conditions of radial misalignment Δ_r . In this the centre of driven half-coupling in which fixed the centre of the rollers (Fig. 2) will shift by Δ_r from point O to point O_1 . In this while coupling rotating range of distances are changing — AB , SA , arc SR by changing the articles за рахунок зміни кутів $\beta_1, \beta_2, \beta_4 - \beta_7$ and the angle of the mounting displacement of the half-couplings ξ .

Points on the calculating scheme, which are relate to roller and rope and lays over radial displacement plane (plane in which both axes of displaced shafts lay) are denoted by an index 1, and those points, which lays under the plane of radial displacement — by an index 2. Respectively angles are denoted by one and two dashes. In this way rope section $O_1R_1S_1A_1$,

which situated over the radial displacement plane, became longer than section $O_1R_2S_2A_2$ under those plane by increasing the length of section S_1A_1 in comparison with S_2A_2 and arc R_1S_1 in comparison with R_2S_2 (increasing the roller reach angle β_2' in comparison with angle β_2'').

For rope elongation determination and respectively load on shafts from coupling in present of radial misalignment Δ_r it necessary to determinate rope length in that conditions. This task is reducing to determination of mentioned sections $O_1R_1S_1A_1$ and $O_1R_2S_2A_2$ length and respectively angles $\beta_2' = \beta_5' + \beta_6' + \beta_7'$ and $\beta_2'' = \beta_5'' + \beta_6'' + \beta_7''$.

To find this angles we need to determinate also reduced mounting displacement angles ξ_1' and ξ_2' . It is necessary to determinate all parameters depending of coupling rotation angle relatively of radial displacement plane.

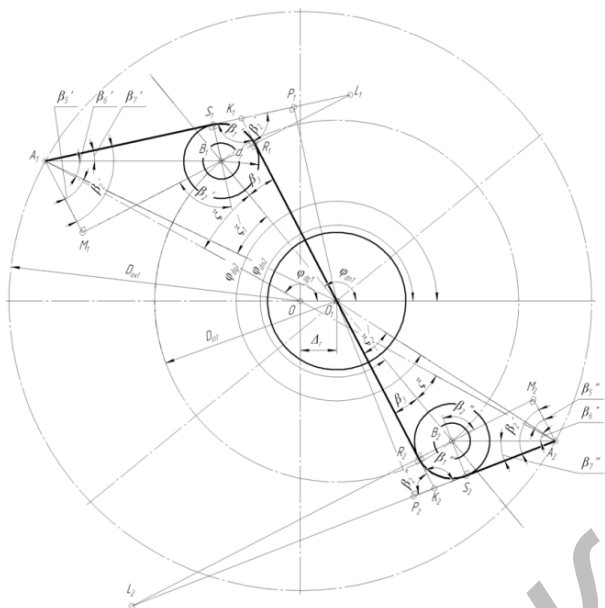


Figure 2. Scheme to geometric calculation coupling

On the first stage we will show connection with rotation angles φ_{dg} of driving half-coupling and φ_{dn} of driven half-coupling when operation of radial displacement conditions. For this let's consider the scheme shown on Figure 3.

Let's consider coupling position in which sections AB are parallel to radial displacement plane (Fig. 3). Triangles OA_1C_1 and $O_1B_1C_3$ are giving the opportunity to obtain formulas for angle coordinates the roller centre point B and the point A of rope end anchoring in this position.

$$\cos \chi = \frac{O_1C_3}{O_1B_1} = \frac{h}{0,5D_{int}}, \quad (1)$$

where h — triangle OA_1C_1 height.

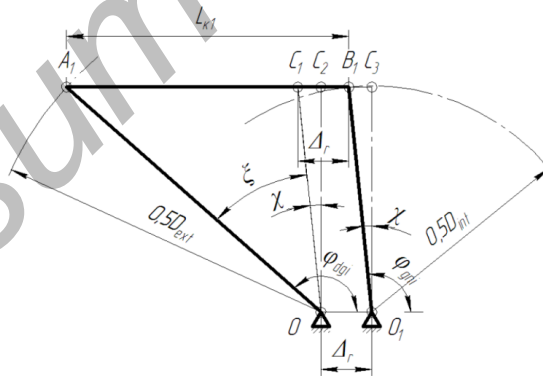


Figure 3. Scheme to calculation of angle coordinate coupling elements

Withal, writing formula for triangle OA_1C_1 like a half of area parallelogram, built on sides OA_1 and OC_1 :

$$h = \frac{2S_{OA_1C_1}}{A_1C_1} = \frac{2 \times 0,5 \times OA_1 \times OC_1 \times \sin \xi}{L_{\kappa 0}} = \frac{0,25D_{ext}D_{int} \sin \xi}{L_{\kappa 0}}, \quad (2)$$

where $L_{\kappa 0}$ — the original rope length without radial displacement influence.

With considering (1) and (2) we obtain:

$$\cos \chi = \frac{0,5D_{\text{ЗВ}} \sin \xi}{L_{\kappa 0}}. \quad (3)$$

Then expressions for obtaining angle coordinates in that position will have the form:

$$\varphi_{dgi} = \frac{\pi}{2} + \chi + \xi = \frac{\pi}{2} + \arccos \frac{0,5D_{ext} \sin \xi}{L_{AB}} + \xi; \quad (4)$$

$$\varphi_{dni} = \frac{\pi}{2} + \chi = \frac{\pi}{2} + \arccos \frac{0,5D_{ext} \sin \xi}{L_{AB}}; \quad (5)$$

$$\varphi_{dgi} - \varphi_{dni} = \xi. \quad (6)$$

The problem of finding section AB length in each position we shall solve by method closed vector circuits of prof. V.A. Zinoviev [1, 2]. For obtaining further calculation lets imagine kinematic scheme of replacement mechanism in the form of a closed vector circuit AOO_1B (Fig. 4), for which we can write vector equation:

$$\vec{V}_1 + \vec{V}_2 = \vec{V}_3 + \vec{V}_4, \quad (7)$$

where $\vec{V}_1 = OA$ – driving half coupling radius; $\vec{V}_2 = L$ – distance between A and B points; $\vec{V}_3 = \Delta_r$ – radial misalignment; $\vec{V}_4 = O_1B$ – driven half coupling radius.

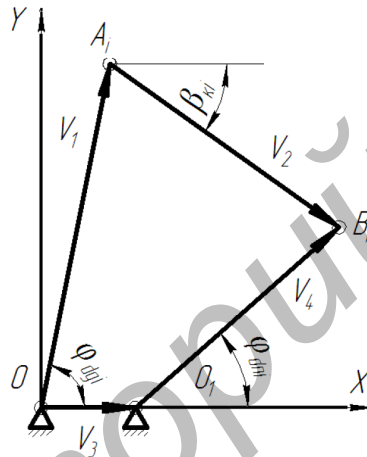


Figure 4. Scheme of closed vector circuit replacement mechanism

The resulting equation (7) I projections on coordinate axes will have the form of a equation system (8):

$$\begin{cases} X : V_1 \cos \varphi_{dgi} + V_2 \cos \beta_{\kappa i} = V_3 \cos 0 + V_4 \cos \varphi_{dni}; \\ Y : V_1 \sin \varphi_{dgi} + V_2 \sin \beta_{\kappa i} = V_3 \sin 0 + V_4 \sin \varphi_{dni}. \end{cases} \quad (8)$$

After the transformation we obtain:

$$\begin{cases} V_2 \cos \beta_{\kappa i} = V_3 + V_4 \cos \varphi_{dni} - V_1 \cos \varphi_{dgi} \\ V_2 \sin \beta_{\kappa i} = V_4 \sin \varphi_{dni} - V_1 \sin \varphi_{dgi} \end{cases}. \quad (9)$$

Square both equations (9) and add them, where after transformation we obtain:

$$V_2^2 (\cos^2 \varphi_{\kappa i} + \sin^2 \varphi_{\kappa i}) = (V_3 + V_4 \cos \varphi_{dni} - V_1 \cos \varphi_{dgi})^2 + (V_4 \sin \varphi_{dni} - V_1 \sin \varphi_{dgi})^2; \quad (10)$$

$$V_2 = \sqrt{(V_3 + V_4 \cos \varphi_{dni} - V_1 \cos \varphi_{dgi})^2 + (V_4 \sin \varphi_{dni} - V_1 \sin \varphi_{dgi})^2}. \quad (11)$$

Whence distance AB in any coupling position will be:

$$L_{A_i B_i} = \sqrt{[\Delta_r + 0,5D_{ext}(\cos \varphi_{dni} - \cos \varphi_{dgi})]^2 + [0,5D_{ext}(\sin \varphi_{dni} - \sin \varphi_{dgi})]^2}. \quad (12)$$

Returning to the Figure 3, from triangle OA_1O_1 we can wrote:

$$A_1O_1 = \sqrt{OO_1^2 + OA_1^2 - 2 \times OO_1 \times OA_1 \cos \varphi_{dgi}};$$

$$L_{A_1O_1} = \sqrt{\Delta_r^2 + 0,25D_{ext}^2 - \Delta_r D_{ext} \cos \varphi_{dg1}}; \quad (13)$$

$$L_{A_iO_i} = \sqrt{\Delta_r^2 + 0,25D_{ext}^2 - \Delta_r D_{ext} \cos \varphi_{dgi}}.$$

From triangle $O_1A_1B_1$ by the cosine theorem we have:

$$A_1B_1^2 = A_1O_1^2 + O_1B_1^2 - 2 \times A_1O_1 \times O_1B_1 \cos \xi_1', \quad (14)$$

whence we obtain:

$$\begin{aligned} \xi_1' &= \arccos \left[\frac{A_1O_1^2 + O_1B_1^2 - A_1B_1^2}{2 \times A_1O_1 \times O_1B_1} \right]; \\ \xi_1' &= \arccos \left[\frac{L_{A_1O_1}^2 + 0,25D_{ext}^2 - L_{A_1B_1}^2}{L_{A_1O_1} D_{ext}} \right]; \end{aligned} \quad (15)$$

or in general form

$$\xi_i' = \arccos \left[\frac{L_{A_iO_i}^2 + 0,25D_{int}^2 - L_{A_iB_i}^2}{L_{A_iO_i} D_{int}} \right].$$

Next we can use obtained earlier equations (16), (17), (19)–(21) substituting in place of angle ξ reduced mounting displacement angle ξ_i' .

$$\begin{aligned} \beta_2^i &= \xi_i' + \beta_3 + \beta_6^i + \beta_7^i = \\ &= \xi_i' + \arcsin \frac{d_r}{D_{int}} + \arcsin \left(\frac{0,5D_{int}}{L_{A_iB_i}} \sin \xi_i' \right) + \arcsin \left(\frac{0,5d_r}{L_{A_iB_i}} \right), \end{aligned} \quad (16)$$

$$\beta_1^V = 180 - \beta_2^V, \quad (17)$$

where d_r – roller diameter.

Respectively rope length in each position of coupling will be:

$$L_{r\Delta} = L_{r1} + L_{r2}, \quad (18)$$

where $L_{r1} = S_1A_1 + R_1S_1 + O_1R_1$ – the length of a rope section under radial displacement plane;

$L_{r2} = S_2A_2 + R_2S_2 + O_2R_2$ – the length of a rope section over radial displacement plane, where

$$S_iA_i = A_iB_i \cos \beta_7 = L_{A_iB_i} \cos \left(\arcsin \frac{0,5d_r}{L_{A_iB_i}} \right); \quad (19)$$

$$R_iS_i = \frac{\pi d_r}{360} \beta_2^i; \quad (20)$$

$$O_1R_1 = O_2R_2 = 0,5D_{int} \cos \beta_3 = 0,5D_{int} \cos \left(\arcsin \frac{d_r}{D_{int}} \right). \quad (21)$$

Rope elongation ΔL_r in relatively with rope length L_r in coupling without radial displacement:

$$\Delta L_r = L_{r\Delta} - L_r; \quad (22)$$

$$L_r = 2 \left(0,5D_{int} \cos \beta_3 + \frac{\pi d_r}{360} \beta_2 + L_{AB} \cos \beta_7 \right). \quad (23)$$

Radial load on shafts for rope elongation will be:

$$F_{rad} = A_{\Sigma} E_r \frac{\Delta L_r}{L_r}, \quad (24)$$

where A_{Σ} – total area of wires cross section in rope; $E_p = 1,0 \times 10^5$ MPa – rope tensile modulus [3].

For illustration of obtained results modeling of real coupling operation done. The parameters of coupling were following: $D_{ext} = 120$ mm, $D_{int} = 65$ mm, $d_r = 20$ mm, $\xi = 45^\circ$. Rope length in absence radial displacement,

calculated with obtained earlier equation is $L_r = 184,37$ mm. Force calculation, made with methodic, developed earlier, show that strength condition corresponds rope with construction $6 \times 7(1+6)$ GOST 3069 with diameter $d_r = 2,2$ mm with total area of wires cross section in $A_{\Sigma} = 1,64$ mm². Radial misalignment for clarity $\Delta_r = 0,5$ mm — twice as much as allowed radial displacement for prototype coupling ROTEX SIZE 28 [Δ_r] = 0,25 mm. Angle of rotation φ . varied in range 0...360° across 30°, respectively angles of location coupling elements were calculate of formulas:

$$\varphi_{dg1i} = \varphi_i; \quad (25)$$

$$\varphi_{dn1i} = \varphi_i - \xi; \quad (26)$$

$$\varphi_{dg2i} = \varphi_{dg1i} + \pi; \quad (27)$$

$$\varphi_{dn2i} = \varphi_{dn2i} + \pi. \quad (28)$$

Whence with equation (12) determinate in each position distances $L_{A_1B_1}$ and $L_{A_2B_2}$, with equation (13) distances $L_{A_1O_1}$ and $L_{A_2O_2}$, that with equation (15) reduced mounting displacement angles ξ_1' та ξ_2' , and also angles β_2' , β_2'' , β_1' , β_1'' , and respectively rope length L_r for coaxial (23) and desaxial $L_{r\Delta}$ (18) coupling, rope elongation ΔL_r (22), and radial load F_{rad} from coupling on shafts (24).

Results of modeling are illustrated by Figure 5. From this figure we can make following conclusions. Rope elongation and radial load changing occurs under the asymmetric constant-sign law. In this maximal rope elongation is 0.0055 mm which is 9 times less than radial misalignment Δ_r in modeling. Calculated radial load in this conditions is only 5 N, which illustrating high compensating ability of new proposed coupling. Therefore in modeling misalignment of 0.5 mm radial stiffness of new coupling will be nearly 10 N/mm. The other types of couplings with elastic elements have much higher radial stiffness and making higher radial loads on shafts connected with coupling.

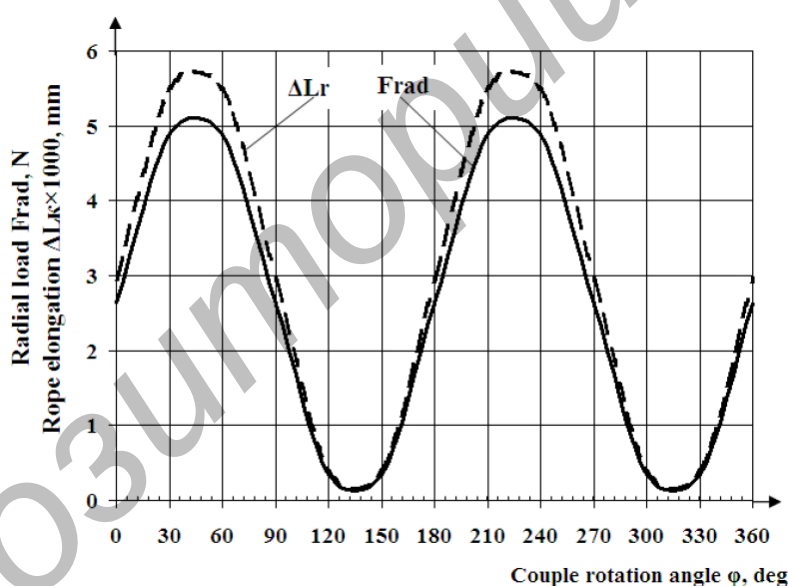


Figure 5. Graph of rope elongation and radial load changing from couple angle of coupling rotation

Done analytical researches allows to make following conclusions:

1. Mathematic model of roller-rope coupling in condition of misalignment made. It allows to calculate rope elongation and radial load on shafts from rope deformation depending on angle of coupling rotation.
2. Rope elongation and radial load changing occurs under the asymmetric constant-sign law and reaches a maximum in position when rope axe R_1R_2 approaching to radial displacement vector OO_1 .
3. Roller-rope coupling construction provides minimal rope elongation and respectively radial load from coupling on shafts. Modeled coupling, for example, in radial misalignment of 0.5 mm have maximum elongation nearly 0.0055 mm and making radial load of only 5 N.

References

- 1 Зиновьев Вяч.А. Курс теории механизмов и машин / Вяч.А. Зиновьев. — М.: Физматгиз, 1960. — 431 с.
- 2 Артоболевский И.И. Теория механизмов / И.И. Артоболевский. — М.: Наука, 1967. — 719 с.
- 3 Малиновский В.А. Стальные канаты: аналитический справочник / В.А. Малиновский. — Одесса: Астропринт, 2016. — 252 с.

В.А. Проценко, М.В. Бабий, В.А. Настасенко

Сәйкессіз шартты арқанды-роликті муфтаның жұмысын математикалық моделдеу

Мақалада радиалды сәйкессіздік жағдайында арқанды-роликті муфтаның конструкциясы, сонымен қатар оның математикалық моделінің жұмысы ұсынылған. Модельдеу нәтижесінде байланыстыратын біліктердің сәйкессіз болғандағы муфта жұмысының процесі анықталды. Сәйкессіздік шамасына қарай арқанның ұзаруын, сондай-ақ муфтаның конструктивті параметрлерін анықтайтын формулалар алынған. Зерттеу нәтижелері муфтаны кез келген бұрышқа бұрағанда муфтадан біліктерге радиалды жүктемені анықтауға мүмкіндік береді. Алынған формулалардың сандық модельдеуі муфтаның жоғары компенсациялық қасиетімен және төмен радиалды қаттылығымен сипатталатынын анықтауға мүмкіндік берді. Радиалды 0,5 мм жылжуда (резеңке жұлдызшасы бар муфта-прототипі үшін 0,25 мм болуы келісілген) арқанның ұзаруы 5,5 мкм болғанда арқанды-роликті муфта біліктерге 5 Н жүктеме жасайды. Алынған тәуелділіктер муфтаны жобалауда апробацияланған, ал есептеу нәтижелері оларды салыстыру арқылы тексеріледі және сәйкестік көрсетті. Алынған нәтижелерді арқанды-роликті муфталарды жобалауда пайдалануға болады.

Кілт сөздер: математикалық модель, сәйкессіздік, муфта, арқан, жүктер, кернеу.

В.А. Проценко, М.В. Бабий, В.А. Настасенко

Математическое моделирование работы канатно-роликовой муфты в условиях несоосности

В статье представлена конструкция канатно-роликовой муфты, а также разработана математическая модель ее работы в условиях радиальной несоосности. В результате моделирования раскрыт процесс работы муфты при наличии несоосности соединяемых ею валов. Получены формулы, позволяющие определить удлинение каната в зависимости от величины несоосности, а также конструктивных параметров муфты. Результаты исследований позволяют также определить радиальную нагрузку от муфты на валы при любом значении угла поворота муфты. Численное моделирование по полученным формулам дало возможность установить, что муфта характеризуется высокой компенсирующей способностью и низкой радиальной жесткостью. Так, при радиальном смещении 0,5 мм (для муфты-прототипа с резиновой звездочкой допускается 0,25 мм) канатно-роликовая муфта создает на валы нагрузку всего 5 Н при удлинении каната в 5,5 мкм. Полученные зависимости апробированы при проектировании муфты, а результаты расчета по ним сравнены с результатами построения и совпали. Результаты могут быть использованы при проектировании канатно-роликовых муфт.

Ключевые слова: математическая модель, несоосность, муфта, канат, нагрузки, натяжение.

References

- 1 Zinoviev, V.A. (1960). *Kurs teorii mekhanizmov i mashin [Course theory of mechanisms and machines]*. Moscow: Fizmathiz [in Russian].
- 2 Artobolevskiy, I.I. (1967). *Teoriia mekhanizmov [Theory of mechanisms]*. Moscow: Nauka [in Russian].
- 3 Malinovskiy, V.A. (2016). *Stalnye kanaty [Steel ropes]*. Odessa: Astroprint [in Russian].