

V.S. Abukenova, Zh.Zh. Blyalova, M.Zh. Blyalova

*Ye.A. Buketov Karaganda State University, Kazakhstan  
(E-mail: zhanerke1807@mail.ru)*

### **The Nura river saprobity degree determination by hydrobionts species composition**

The article contains information on the biological methods effectiveness for determining the saprobity degree of the water bodies by the microscopic representatives species composition of aquatic invertebrates. Aquatic invertebrates are very convenient for bioindication of the ecological state of aquatic ecosystems, as they make unnecessary (or often complement) the use of expensive and time-consuming physical and chemical methods of analysis of environmental parameters; reflect and record the rate of changes in the environment. Aquatic invertebrates, which are bioindicators of contamination, due to the impact of certain factors may show different degrees of intensity of the response in the form of dominance or partial or complete disappearance. In our opinion, there is a direct relationship between the intensity of the invertebrate response-indicators and water quality. It was used one of the most developed biological methods for evaluating water quality using indicator species of zooplankton and zoobenthos — the Pantle-Buck method in the Sladeczek modification. The possibilities of studying the anatomical and morphological organization of microscopic fauna in the educational process are estimated. The hydrobionts species were determined, and a species list inhabiting this watercourse was also compiled. The indicator organisms have been identified, the organic contamination of the watercourse under investigation has been determined.

*Keywords:* degree of saprobity, saprobity index, zooplankton, zoobenthos, saprobiological analysis of the Pantle-Buck modified by Sladeczek.

Environmental assessment of aquatic ecosystems using bioindication methods determines the state and functioning of the integrity of aquatic ecosystems, which makes it possible to determine corrective actions in cases where deviations from the normative indicators of the environmental situation are detected [1].

One of the actual directions in bioindication research is the study of aquatic invertebrates as objects-indicators of the state of the aquatic environment. Most often, as an indicator feature, faunistic composition of aquatic organisms and its changes under the influence of any factors that violate the normal hydrochemical and hydrological regime of reservoirs (watercourses) are offered. At the same time, not enough attention is paid to the justification of the use of different objects and the parameters of the intensity of this effect on the reaction of aquatic invertebrates to the change in the regime of hydrobiocenoses. An integrated approach to the use of different methods of assessment of the state of the aquatic environment is not sufficiently used [2]. At the same time, aquatic invertebrates are a very convenient object for bioindication of the state of aquatic ecosystems, as they make an optional (or often complementary) the use of expensive and time-consuming physical and chemical methods of analysis of parameters of the environment; reflect and record the speed of what is happening in the environment changes [3].

Aquatic invertebrates, which are bioindicators of contamination, due to the impact of certain factors may show different degrees of intensity of the response in the form of dominance or partial or complete disappearance. In our opinion, there is a direct relationship between the intensity of the invertebrate response-indicators and water quality.

Thus, the analysis of methods of ecological assessment of aquatic ecosystems shows that aquatic invertebrates, which are used by many researchers as bioindicators to assess the well-being or disadvantage of hydrobiocenosis, may well be used for the assessment of our water body.

#### *Materials and methods*

The objects of research are zooplankton and zoobenthos of the section of the Nura river (Karaganda region, Bukhar-Zhyrau district, village named after G. Mustafin).

The species diversity of invertebrates of this stream allows to determine the degree of saprobity, thus making it an ideal material for research. The study was conducted in certain seasons from January to December 2017.

The saprobity index of organisms identified in the table «List of species of organisms of the sewage treatment facility indicating saprobes valences on Sladeczek (1973)» [4], «Unified methods of investigation of water quality» edited by V. Sladeczek (1977) [5]; «Species the indices of saprobity and the distribution of the

abundance of algae-indicators in zones of self-purification», «Biological Monitoring: Signals from the Environment» [6].

*The saprobity index Pantle-Buck* (modified by Sladeczek)

One of the most developed biological methods for assessing water quality is the Pantle-Buck method (1955) using indicator species of zoobenthos. Among the simplest, rotifers and worms, there are types of indicators of various kinds of contamination, on the basis of which the saprobity index in the watercourse is determined. The ratio of indicator species to the five known degrees of saprobity ( $s$ ) and the relative frequency of their occurrence ( $h$ ) are taken into account. These values are included in the formula (1) calculation of the saprobity index —  $S$ :

$$S = \frac{\sum(sh)}{\sum h} \quad (1)$$

The value of  $h$  is on a six-step scale of frequency of occurrence and determines the relative number of species (Table 1).

Table 1

A six-speed scale of frequency values of occurrence

Frequency of occurrence	Number of instances of one species, % of the total number of instances	$h$
Very rarely	<1	1
Rarely	2–10	2
Quite often	10–40	3
Often	40–60	5
Very often	60–80	7
Mass	80–100	9

The saprobity index in oligosaprobic area equal to 0.50–1.50 (pure water), in  $\beta$ -mezosaprobic area — 1.51–2.50 (water of moderate contamination),  $\alpha$ -mesosaprobic — 2.51–3.50 (contaminated water), polysaprobic area — 3.51–4.50 (dirty water) [7].

#### *Results and discussion*

We studied the species composition of zooplankton and zoobenthos of the studied watercourse. The study of species composition is not considered to be mandatory for the detection of water quality, but still the determination to the species will give a more accurate idea of the biocenosis of the watercourse and its changes under the influence of various factors.

During the microscopy, a microscopic video complex based on BinaLogic 6XB-PC was used, which displays the image on the computer. With the help of Altami Studio were also taken pictures of algae, which made it easier to determine the species composition of indicator organisms. To make the pictures clearer, they were processed in Adobe photoshop CC. The images were applied filters sharpness, color contrast and blur. Sharpness is applied to increase the accuracy of the resulting photos and facilitate the definition of the species. Color contrast filter is used for dim photos to increase color contrast. During the microscopy the species of zooplankton and zoobenthos belonging to 16 genera were determined.

For a more reliable assessment of the level of contamination of the watercourse, we used biological indicators such as phytoplankton and phytobentos as an additional indicator of saprobity.

We studied the species composition of the studied areas of the watercourse. The study of species composition is not considered to be mandatory to identify the quality of water purification, but still the determination to the species will give a more accurate idea of the biocenosis of the watercourse and its changes under the influence of various factors.

During the microscopy, a microscopic video complex based on BinaLogic 6XB-PC was used, which displays the image on the computer. With the help of Altami Studio, invertebrate images were also taken, which made it easier to determine the species composition of indicator organisms. To make the pictures clearer, they were processed in Adobe Photoshop CC. The images were applied filters sharpness, color contrast and blur. Sharpness is applied to increase the accuracy of the resulting photos and facilitate the definition of the species. Color contrast filter is used for dim photos to increase color contrast. During microscopy, the species of indicator invertebrates belonging to 5 genera were determined.

*Diffflugia acuminata* (Ehrenberg, 1838) (Fig. 1). The shell is pitcher-like, inlaid with grains of sand and other mineral particles, among which may be organic material. At the back end — the shell has a conical growth, inlaid with the same material as the sink. The length of the shell is 80–340, the width in the extended part is 40–150  $\mu\text{m}$ .

The species is widely distributed in the coastal zones of water bodies, the layer of detritus.

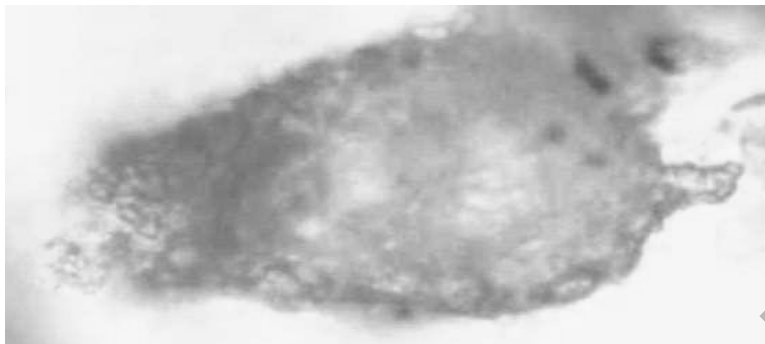


Figure 1. *Diffflugia acuminata*

*Rotaria rotatoria* (Pallas, 1766) (Fig. 2). The body varies from small to large, usually narrow, with a long leg, from whitish to yellowish-brown. The crown is much wider than the head. Proboscis is short. The dorsal tentacle is thin, longer than the width of the trunk. The upper lip is drawn in, the lower one is wide and hanging down. The neck is short, wide. The body is covered with folds, sometimes graininess, from the femoral part is slightly separated. The leg is very long, 6-segmented, with spurs gradually tapering into sharp ends and diverging to the sides. Fingers long, slender; dorsal finger is longer than the abdominal. Spurs strongly divergent, sometimes reduced to sharp spikes. The eye stains are small. In uncus 2/2 teeth.

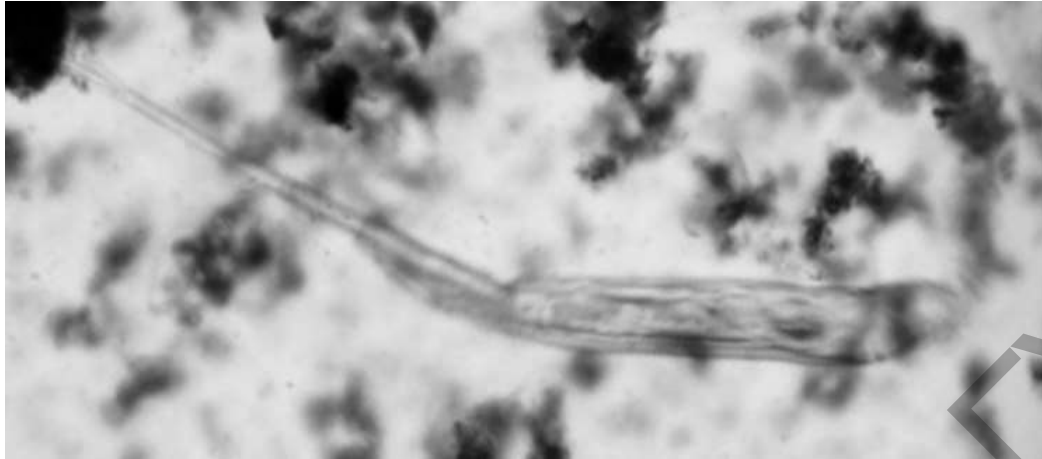


Figure 2. *Rotaria rotatoria*

Body length 230–1090  $\mu\text{m}$ . Buildable, highly variable appearance. Widespread in weedy ponds atrofirovany in detritus, silt, in the moss, in wastewater treatment plants,  $\alpha$ -mesosaprobic. In fresh, brackish, sea waters and thermal springs. Cosmopolitan species.

*Rotaria neptunia* (Ehrenberg, 1832) (Fig. 3). The body is unusually long, with dense covers. The trunk is cylindrical, very thin, densely covered with points. The crown is small, narrow. Proboscis short, wide, 2-segmented. The dorsal tentacle is short. Leg with thin segments, extremely long, longer than half of the entire length of the body. Spurs and fingers are very thin, divergent. Eye spots are small but well visible. In uncus 2/2 teeth. Body length 725–1600  $\mu\text{m}$ .

It occurs in small overgrown and polluted waters, in detritus, or, more rarely in plankton. Polisaprobic species. It is widely distributed. Cosmopolitan species [8].

Figure 3. *Rotaria neptunia*

During the study period we found representatives of Crustacea subtype, including individuals of 2 classes: Maxillopoda, Branchiopoda.

The Maxillopoda class includes 2 types: *Eucyclops serrulatus* and *Microcyclops varicans*.

*Eucyclops serrulatus* (Fig. 4) has a slender body, correct oval shape. Posterior thoracic segment on the sides with a group of small hairs. Abdomen is thin. The genital segment in the main part is strongly expanded, its rear part is almost cylindrical, only slightly narrowing posteriorly. Length of females 0.8–1.5, males 0.65–0.68 mm.

Figure 4. *Eucyclops serrulatus*

*E. serrulatus* is a benthic species that lives in a wide variety of standing and flowing water bodies, in thickets of water-coastal vegetation, widely distributed in various small bodies of water [9].

To the class Branchiopoda include the species *Alona quadrangularis*.

In the area of bushes there are species of genus *Alona* — small crustaceans with oval shell with flattened on the ventral edge of the valves (Fig. 5).

The body of *Daphnia*, except for the head Department, is enclosed in a carapax, having the form of a bivalve chitin shell. *Daphnia* the head is elongated in Church growth — rostrum. On the head there is an unpaired facet eye formed as a result of the merger of two eyes. Thoracic *Daphnia* has no traces of segmentation, and the number of its constituent segments can be judged by the number of thoracic limbs. *Daphnia* has five pairs. All limbs carry external (exit polls) and internal (audits) growths. The closest to the base of the exit polls-epipodites, perform the function of gills.

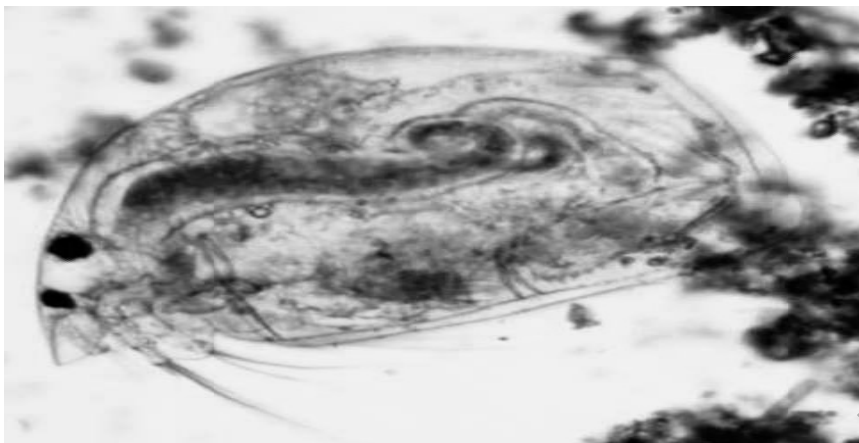


Figure 5. *Alona quadrangularis*

We also found representatives of the Mollusca: *Lymnaea stagnalis* type.

Common pond (*Lymnaea stagnalis*) is a species of freshwater molluscs from the category of pulmonary molluscs, common in the Holarctic (Fig. 6).



Figure 6. *Lymnaea stagnalis*

The shell is 45–60 mm long and 20–34 mm wide, solid, spirally twisted, has 4–5 turns. On the head there are two sensitive tentacles, two eyes and a mouth.

The pond is fed mostly with algae, detritus and carrion. At the common pond snail has a lung, where gas exchange occurs blood with air, the heart with auricle and ventricle providing blood flow in open circulatory system, peripharyngeal nerve ganglia, language in the form of a notched trowel, the digestive system — throat, stomach, liver, intestines. Pond snails are hermaphrodites [10].

Hydrofauna is represented by 6 species of aquatic invertebrates, belonging to 5 genera.

We have conducted saprobiological analysis of river Nura at Pantle-Buck method modified by Sladeczek (zooplankton, zoobenthos).

The characteristics of saprobity level in zooplankton, zoobenthos of the Nura river are shown in Table 2.

Table 2

**Species composition, indicator properties, and the occurrence of aquatic organisms at the site of the Nura river (2017)**

Taxon	Saprobic indicator	Conditional value of saprobity (s)	The frequency of occurred individuals (h)	Multiply the conditional value of saprobity (s) and the frequency of occurred individuals (h)
1	2	3	4	5
<i>Diffugia acuminata</i>	β	1.7	3	5.1
<i>Rotaria rotatoria</i>	α	3.25	2	6.5
<i>Rotaria neptunia</i>	p	3.8	2	7.6

Continuation of Table 2

1	2	3	4	5
<i>Eucyclops serrulatus</i>	$\beta$	1.85	3	5.55
<i>Alona quadrangularis</i>	$\alpha$ - $\beta$	1.4	3	4.2
<i>Lymnaea stagnalis</i>	$\beta$	2	2	4
The Pantle-Buck method modified by Sladeczek $S = \frac{\sum(sh)}{\sum h} \quad (2.2)$			The sum of the frequencies $h=15$	The sum of the multiplications of conditional value of saprobity on the frequency $(sh)=32.95$

The total number of species of zoohydrobionts with an indicator value found in the studied watercourse is 6, belonging to 5 classes: Tubulinea, Maxillopoda, Branchiopoda and Gastropoda — 17% (1 species), Rotifera — 32% (2 species). Saprobity is calculated separately for the section of the Nura river. The following data are obtained: the saprobity of the river water is 2.2. Also from table 1 shows that the highest percentage of species of hydrobionts belong to the  $\beta$ -mesosaprobic organisms (3 species).

In the course of our study, the composition of the hydrofauna was low, there were 5 genera of aquatic invertebrates belonging to 5 classes. To facilitate the task of identifying aquatic invertebrates to take pictures with a microscopic videokompleks on the basis of BinaLogic 6XB-PC.

The following conclusions can be drawn from the results of the work:

Hydrobionts was represented by 4 types, 5 classes, 5 genera, 6 species. All 6 species belong to indicator organisms, the most significant are representatives of *Diffflugia acuminata*, *Eucyclops serrulatus*, *Lymnaea stagnalis*.

The investigated water flow belongs to  $\beta$ -saprobic (3 class of water quality-organically «moderately contamination») according to the degree of saprobity in the Pantle-Buck.

The work performed can be useful for determining the water quality of natural waters. The species composition and the percentage of occurrence of aquatic organisms allows to determine the environmental conditions for aquatic organisms and to decide what should be done to preserve the sustainable biocenosis. The study of the species composition of zooplankton, zoobenthos section of the river Nura complements the information about the state of aquatic ecosystems of the Karaganda region.

## References

- 1 Алексеев В.В. Система оценки качества водных объектов по комплексу гидробиологических показателей на геинформационной основе / В.В. Алексеев, Е.Г. Гридина, Н.И. Куракина, А.А. Минина // Труды междунар. симпозиума. — Пенза: Изд-во Пенз. гос. ун-та, 2006.
- 2 Изотов А.А. Использование высших водных растений как индикаторов состояния окружающей среды: дис. ... канд. биол. наук / А.А. Изотов. — Калуга, 2003. — С. 7–26.
- 3 Беспозвоночные животные как биоиндикаторы современного состояния водных и наземных экосистем и динамики их изменения в условиях возможного воздействия антропогенных факторов [Электронный ресурс]. — Режим доступа: <http://www.za-hoper.ru/Nickel.pdf>
- 4 Sladeczek V. System of water quality from biological point of view / V. Sladeczek // Ergebnisse der Limnologie, Arch. Hydrobiol. — 1973. — Vol. 76. — S. 218.
- 5 Унифицированные методы исследования качества вод. Ч. 3. Методы биологического анализа вод. Атлас сапробных организмов. — М.: Изд. отдел Секретариата СЭВ, 1977. — 227 с.
- 6 Каплин В.Г. Биоиндикация состояния экосистем: учеб. пособие для студ. биол. спец. ун-тов и с.-х. вузов / В.Г. Каплин. — Самара: Самарская ГСХА, 2001. — 143 с.
- 7 Пантелеев В.Г. Компьютерная микроскопия / В.Г. Пантелеев, О.В. Егорова, Е.И. Клыкова. — М.: Техносфера, 2005. — 304 с.
- 8 Кутикова Л.А. Фауна аэротенков (Атлас) / Л.А. Кутикова. — Л.: Наука, 1984. — 264 с.
- 9 Отряд Настоящие пластинчатожаберные (Eulamellibranchia) [Электронный ресурс]. — Режим доступа: <http://animalkingdom.su/books/item/f00/s00/z0000072/st023.shtml>
- 10 Властов Б.В. Класс Брюхоногие моллюски (Gastropoda) // Жизнь животных. Том 2. Моллюски. Иглокожие. Погонофоры. Щетинкочелюстные. Полухордовые. Хордовые. Членистоногие. Ракообразные / Б.В. Властов, П.В. Маткин; под ред. Р.К. Пастернак, гл. ред. В.Е. Соколов. — 2-е изд. — М.: Просвещение, 1988. — С. 62. — 447 с.

В.С. Абуkenова, Ж.Ж. Блялова, М.Ж. Блялова

## Нұра өзенінің гидробионттардың түрлік құрамы бойынша сапробтық дәрежесін анықтау

Мақалада су омыртқасыздар микроскопиялық өкілдерінің түрлік құрам бойынша су объектілерінің сапробтық дәрежесін анықтау үшін биологиялық әдістердің қолдану тиімділігі туралы мәліметтер келтірілген. Су омыртқасыздар су экожүйелерінің экологиялық жағдайын биоиндикациялау үшін өте ыңғайлы нысан болып табылады, себебі олар қымбат және көп еңбекті физика-химиялық әдістерін қолдануын міндетті емес (немесе жиі тек толықтыратын) болып жасайды; қоршаған ортада болып жатқан өзгерістерді көрсетеді және сол өзгерістердің жылдамдығын тіркейді. Су омыртқасыздар ластану биоиндикатор болып табылады, олар ішінара немесе толық жоғалуы түрінде қоршаған ортаның ықпал ету немесе өзге де факторлардың танытуға әртүрлі жауап реакциясының қарқындылық дәрежесін көрсетеді. Біздің ойымызша, омыртқасыздар-индикаторлар қарқындылығы реакция мен су сапасы арасындағы тікелей тәуелділік бар. Зоопланктон және зообентос индикаторлық түрлерді пайдаланып, су объектілердің экологиялық жағдайын бағалау үшін ең мықты биологиялық әдістердің бірі — Сладечек модификациясындағы Пантле-Букк әдісі қолданылған. Гидробионттардың түрлері анықталып, индикаторлық ағзалардың тізімі жасалған. Зерттелетін су нысанының органикалық ластану деңгейі анықталған.

*Кілт сөздер:* сапробтық дәрежесі, сапробтық индексі, зоопланктон, зообентос, Сладечек модификациясындағы Пантле-Букк әдісі бойынша сапробиологиялық талдау.

В.С. Абуkenова, Ж.Ж. Блялова, М.Ж. Блялова

## Определение степени сапробности реки Нуры по видовому составу гидробионтов

В статье приведены сведения об эффективности биологических методик определения степени сапробности водных объектов по видовому составу микроскопических представителей водных беспозвоночных. Водные беспозвоночные являются очень удобным объектом для биоиндикации состояния водных экосистем, так как они делают необязательным (или часто дополняют) применение дорогостоящих и трудоемких физико-химических методов анализа параметров окружающей среды; отражают и фиксируют скорость происходящих в окружающей природной среде изменений. Водные беспозвоночные, являющиеся биоиндикаторами загрязнения, в силу воздействия тех или иных факторов могут проявлять различную степень интенсивности ответной реакции в виде доминирования, либо частичного, или полного исчезновения. На наш взгляд, имеется прямая зависимость между интенсивностью реакции беспозвоночных-индикаторов и качеством воды. Использован один из наиболее разработанных биологических методов оценки качества воды с использованием индикаторных видов зоопланктона и зообентоса — метод Пантле-Букка в модификации Сладечека. Оценены возможности изучения анатомо-морфологической организации микроскопической фауны в учебном процессе. Определены виды гидробионтов, также был составлен список видов, населяющих данный водоток. Выявлены индикаторные организмы, определена степень органической загрязненности исследуемого водотока.

*Ключевые слова:* степень сапробности, индекс сапробности, зоопланктон, зообентос, сапробиологический анализ по Пантле-Букку в модификации Сладечека.

### References

1. Alekseev, V.V., Gridina, E.G., Kurakina, N.I., & Minina, A.A. (2006). Sistema otsenki kachestva vodnykh obektov po kompleksu hidrobiologicheskikh pokazatelei na heoinformatsionnoi osnove [The system of assessment of water bodies quality on a complex of hydrobiological indicators on the basis of geoinformation]. *Trudy mezhdunarodnoho simpoziuma — Proceedings of the International symposium*. Penza: PenzaSU Publ. [in Russian].
2. Izotov, A.A. (2003). Ispolzovanie vysshikh vodnykh rastenii kak indikatorov sostoiianiia okruzhaiushchei sredy [The use of higher aquatic plants as indicators of the state of the environment]. *Candidate's thesis*. Kaluga [in Russian].
3. Bespozvochnnye zhivotnye kak bioindikatorы sovremennoho sostoiianiia vodnykh i nazemnykh ekosistem i dinamiki ikh izmeneniia v usloviiakh vozmozhnoho vozdeistviia antropohennykh faktorov [Invertebrate animals as bioindicators of the current state of aquatic and terrestrial ecosystems and the dynamics of their changes in the context of the possible impact of anthropogenic factors]. *www.za-hoper.ru*. Retrieved from <http://www.za-hoper.ru/Nickel.pdf> [in Russian].
4. Sladeczek, V. (1973). System of water quality from biological point of view. *Ergebnisse der Limnologie, Arch. Hydrobiol.*, 76, 218.

- 5 Unifitsirovannye metody issledovaniia kachestva vod. Chast 3. Metody biolohicheskoho analiza vod. Atlas saprobnykh orhanizmov [Unified methods of water quality research. Part 3. Methods of biological analysis of water. Atlas of saprobic organisms] (1977). Moscow: Publishing department of the CMEA Secretariat [in Russian].
- 6 Kaplin, V.G. (2001). *Bioindikatsiia sostoianiia ekosistem [Bioindication of ecosystems]*. Samara: Samara State agricultural academy [in Russian].
- 7 Pantelev, V.G., Egorova, O.V., & Klykova, E.I. (2005). *Kompiuternaia mikroskopiia [Computer microscopy]*. Moscow: Tekhnosfera [in Russian].
- 8 Kutikova, L.A. (1984). *Fauna aerotenkov (Atlas) [Fauna of aeration tanks (Atlas)]*. Leningrad: Nauka [in Russian].
- 9 Otriad Nastoiaishchie plastinchatozhabernye (Eulamellibranchia) [Order The present lamellarbranch (Eulamellibranchia)]. *animalkingdom.su*. Retrieved from <http://animalkingdom.su/books/item/f00/s00/z0000072/st023.shtml> [in Russian].
- 10 Vlastov, B.V., & Matekin, P.V. (Ed. R.K. Pasternak; Main Ed. V.E. Sokolov) (1988). *Klass Briukhonohie molliuski (Gastropoda) [Class Gastropods (Gastropoda)]*. *Zhizn zhivotnykh. Molliuski. Ihlokozhiye. Pohonofory. Shchetinkocheliustnye. Polukhordovye. Khordovye. Chlenistonogie. Rakoobraznye — The Life of animals. Mollusca. Echinoderms. Pogonophora. Bristle-jaw. Half-chord. Chordata. Arthropoda. Crustaceans.* (Vol. 2). Moscow: Prosveshchenie [in Russian].